

# JRiver MC24:

 **Author Topic: New feature request: Input Selector, MC24 (Read 359 times)**

[HOME](#) [HELP](#) [SEARCH](#) [PROFILE](#) [MY MESSAGES](#) [CALENDAR](#) [MEMBERS](#) [LOGOUT](#)

INTERACT FORUM > Windows > JRiver Media Center 24 for Windows > New feature request: Input Selector, MC24



« previous next »


Pages: [1] Go Down

[REPLY](#) [ADD POLL](#) [NOTIFY](#) [MARK UNREAD](#) [SEND THIS TOPIC](#) [PRINT](#)

Author

Topic: New feature request: Input Selector, MC24 (Read 359 times)

 pschelbert  
Galactic Citizen  
  
Posts: 370

 New feature request: Input Selector, MC24  
« on: January 04, 2019, 05:28:50 am »

[Quote](#) [Modify](#)

Hi

I frequently use Inputs from my AD DA multichannel Interface (RME UFX, RME UFX II). While I can select input channels from RME UFX and UFX II by "Open Live" and then choosing ASIO, WDM etc. this is clumsy. Moreover because I need an offset and a digital loopback to be configured, tricky (RME specific).

Also Listening to Spotify, youtube etc I need to:  
"Open Live WDM"

Now I propose to add in the section "Open" any input available by the hardware (AD DA multichannel device)  
It could be done like "Zones", adding any Inputs (in Stereo pairs best).

I could for example configure:

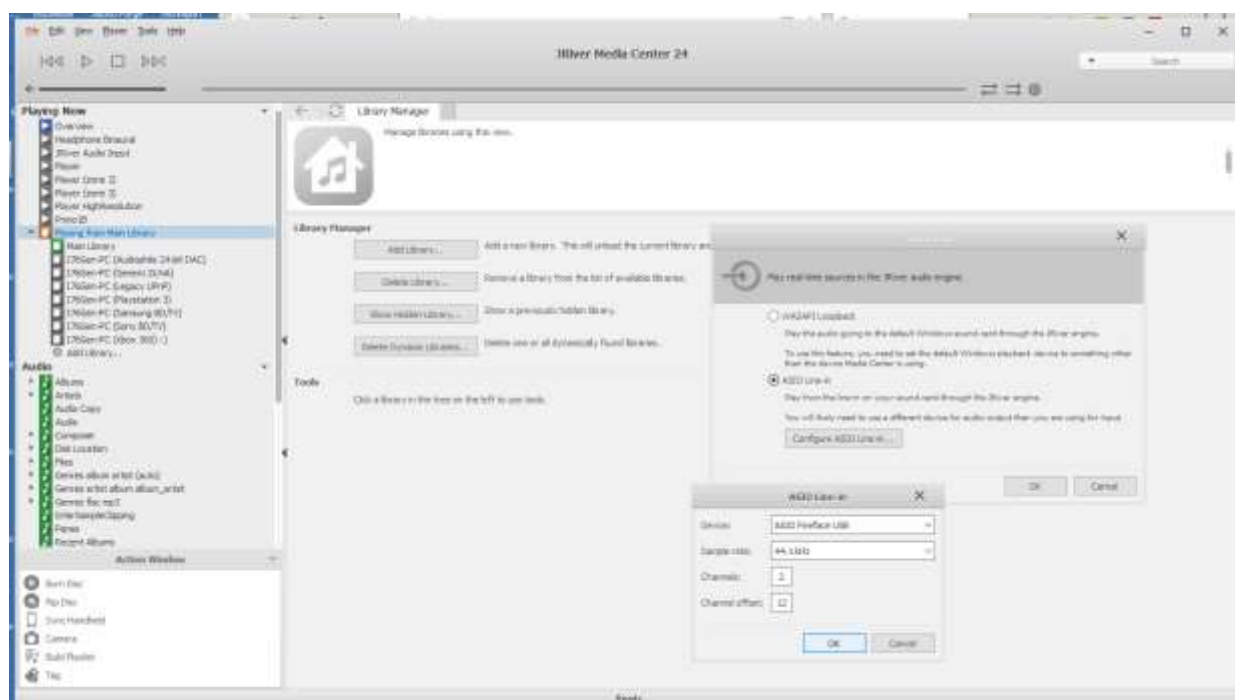
Input Selector:  
-Phono (would be RME UFX Analog1 and analog2, ASIO)  
-Tape (would be Analog3, Analog4, ASIO)  
-Windows: Spotify, Youtube etc.: would be WDM from Windows sound System  
-Open Live (as is today)  
-Open https (as is today)  
-Open File (as is today)

Whereas "Phono, Tape etc. names are configurable in and if they are there or not (can be added like "adding Zones")  
Default would be as of today.  
If user wants more inputs, they must be added manually.

MC24 would work like a preamp source-selector.

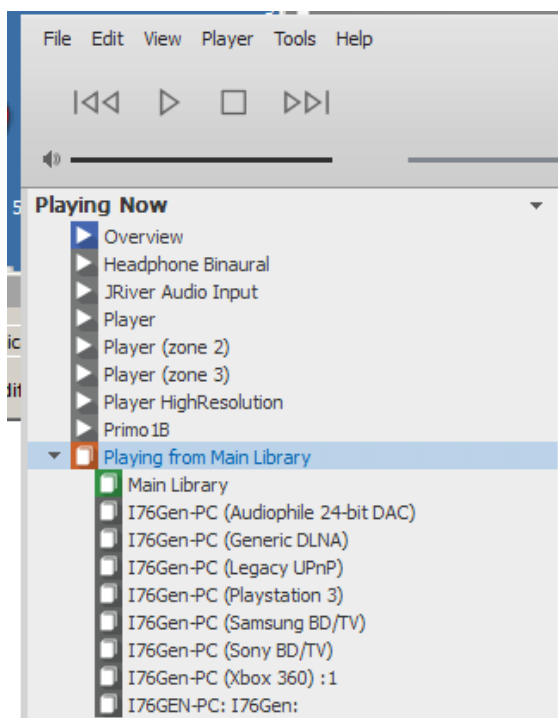
P.S.:  
I do not have anymore a preamp, I do everything in MC24 and in Totalmix (RME routing tool).  
RME UFX has 12x analog and 2x8 digital inputs, plenty. However I would not configure all of them, just about 4x Stereo

Peter



## Proposal how to add Input to JRiver:

- Add in Section Playing Now ias a Library
- Would look like depicted here:



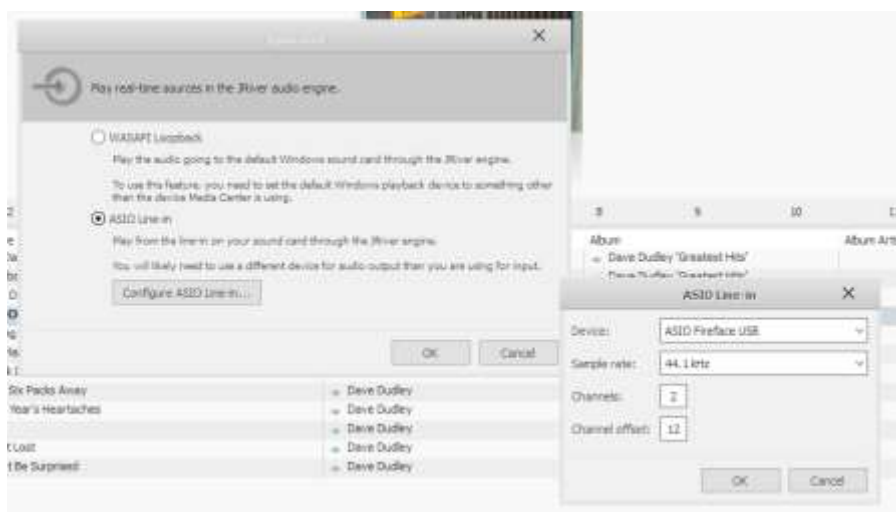
Tape Recorder

Windows Sound System ADAT1 (1+2)

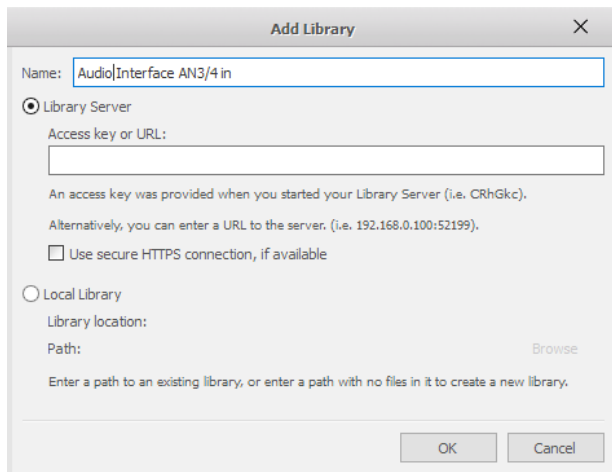
Qobuz

Audio Interface AN3/4

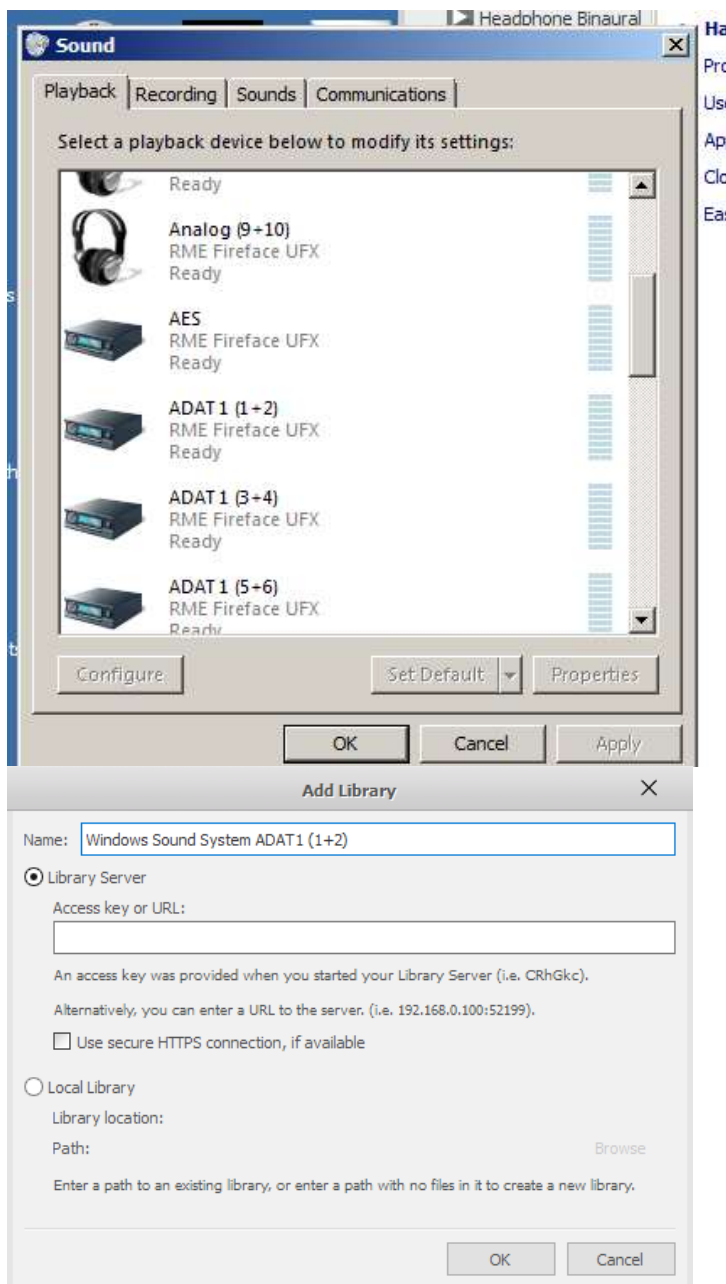
Addin a Playing Now entry under Library like via *Open Live*:



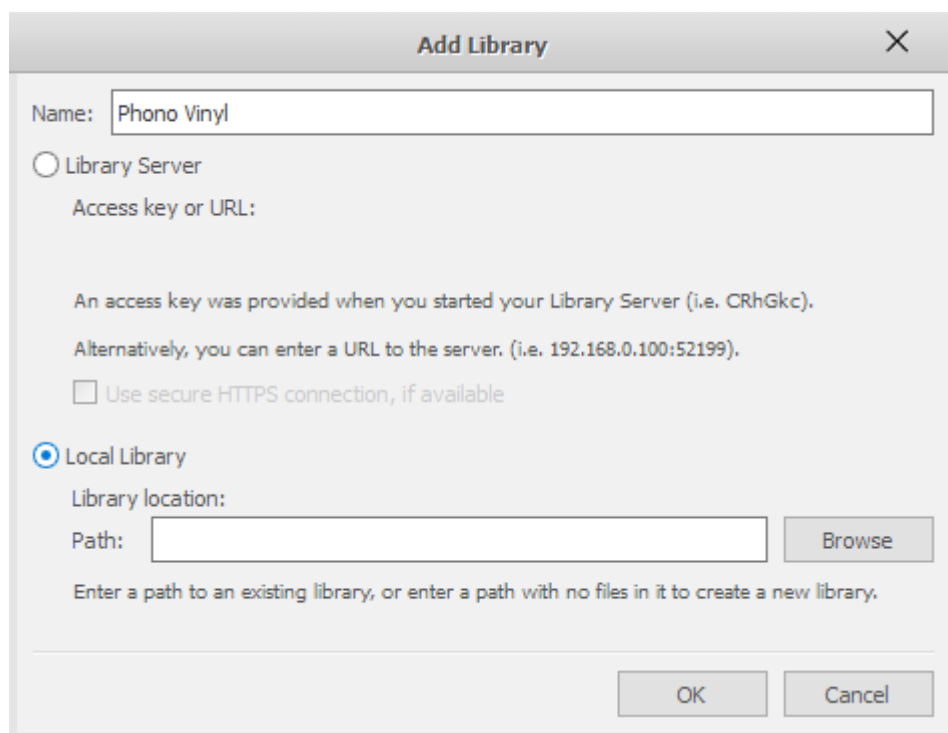
Adding any Input from the Audiointerface:



Adding an Input from Windwos Sound System (ADAT1 (1+2))

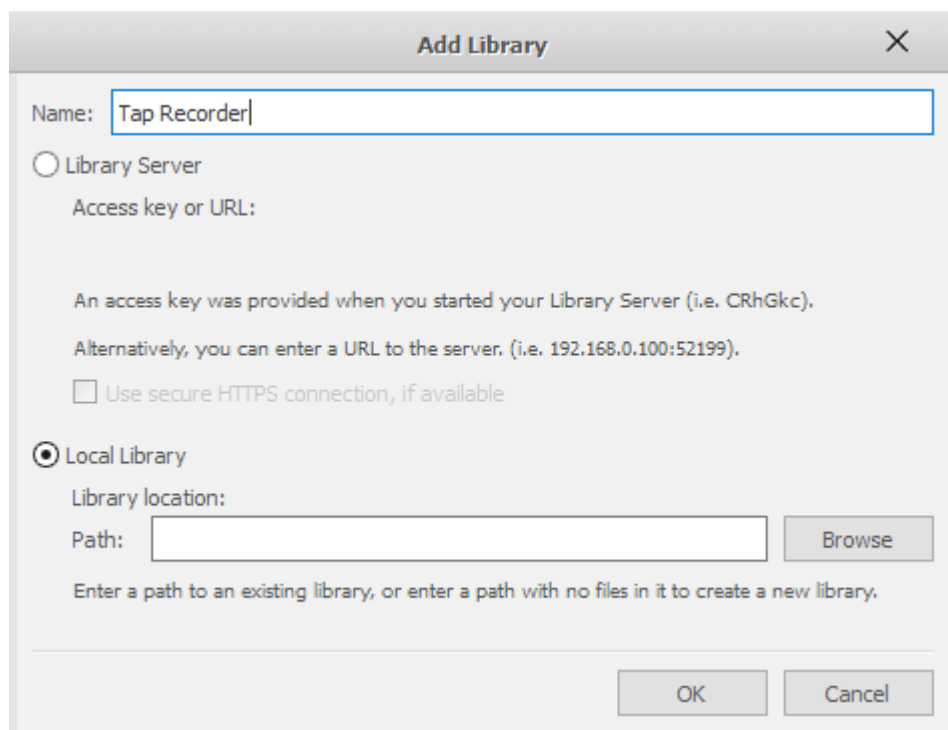


Phono Vinyl could be added with *Open Live* mechanism pointing to any Input of the Audio Interface, ASIO for example.



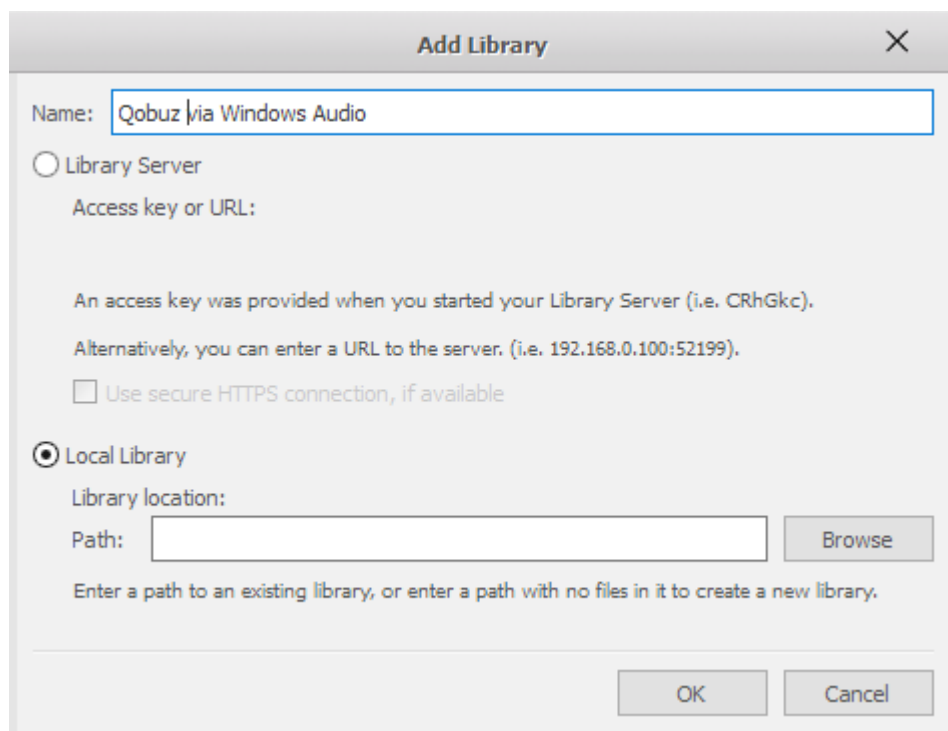
The screenshot shows a dialog box titled "Add Library" with a close button (X) in the top right corner. The "Name:" field contains the text "Phono Vinyl". Below this, there are two radio button options: "Library Server" (unselected) and "Local Library" (selected). Under "Library Server", there is a label "Access key or URL:" followed by explanatory text: "An access key was provided when you started your Library Server (i.e. CRhGkc). Alternatively, you can enter a URL to the server. (i.e. 192.168.0.100:52199)." and a checkbox "Use secure HTTPS connection, if available" which is unchecked. Under "Local Library", there is a label "Library location:" followed by a "Path:" label and an empty text input field. To the right of the input field is a "Browse" button. Below the input field is the instruction: "Enter a path to an existing library, or enter a path with no files in it to create a new library." At the bottom of the dialog are "OK" and "Cancel" buttons.

Tape Recorder could be added with *Open Live* mechanism pointing to any Input of the Audio Interface, ASIO for example.



The screenshot shows a dialog box titled "Add Library" with a close button (X) in the top right corner. The "Name:" field contains the text "Tap Recorder". Below this, there are two radio button options: "Library Server" (unselected) and "Local Library" (selected). Under "Library Server", there is a label "Access key or URL:" followed by explanatory text: "An access key was provided when you started your Library Server (i.e. CRhGkc). Alternatively, you can enter a URL to the server. (i.e. 192.168.0.100:52199)." and a checkbox "Use secure HTTPS connection, if available" which is unchecked. Under "Local Library", there is a label "Library location:" followed by a "Path:" label and an empty text input field. To the right of the input field is a "Browse" button. Below the input field is the instruction: "Enter a path to an existing library, or enter a path with no files in it to create a new library." At the bottom of the dialog are "OK" and "Cancel" buttons.

Qobuz, Spotify, Deezer could be just added via an entry which points to the *Open Live* via Windows Sound System. Qobuz, Spotify, Deezer just play through Windows Sound System!



How to add an input to the Playing now (Library): same as *Open Live*

