

JRiver „Open Live“

Question: How do I get analog inputs of RME UFX, RME UFX II into jRiver via ASIO driver?

Why you want to do that?

- 1) Turntable/Vinyl LP playing through JRiver
- 2) Tape Recorder playing through JRiver
- 3) Etc.

Input from analog inputs via ASIO playing through JRiver

- 1) Connect Line Level signal to RME UFX, RME UFX II inputs, for example AN3/4

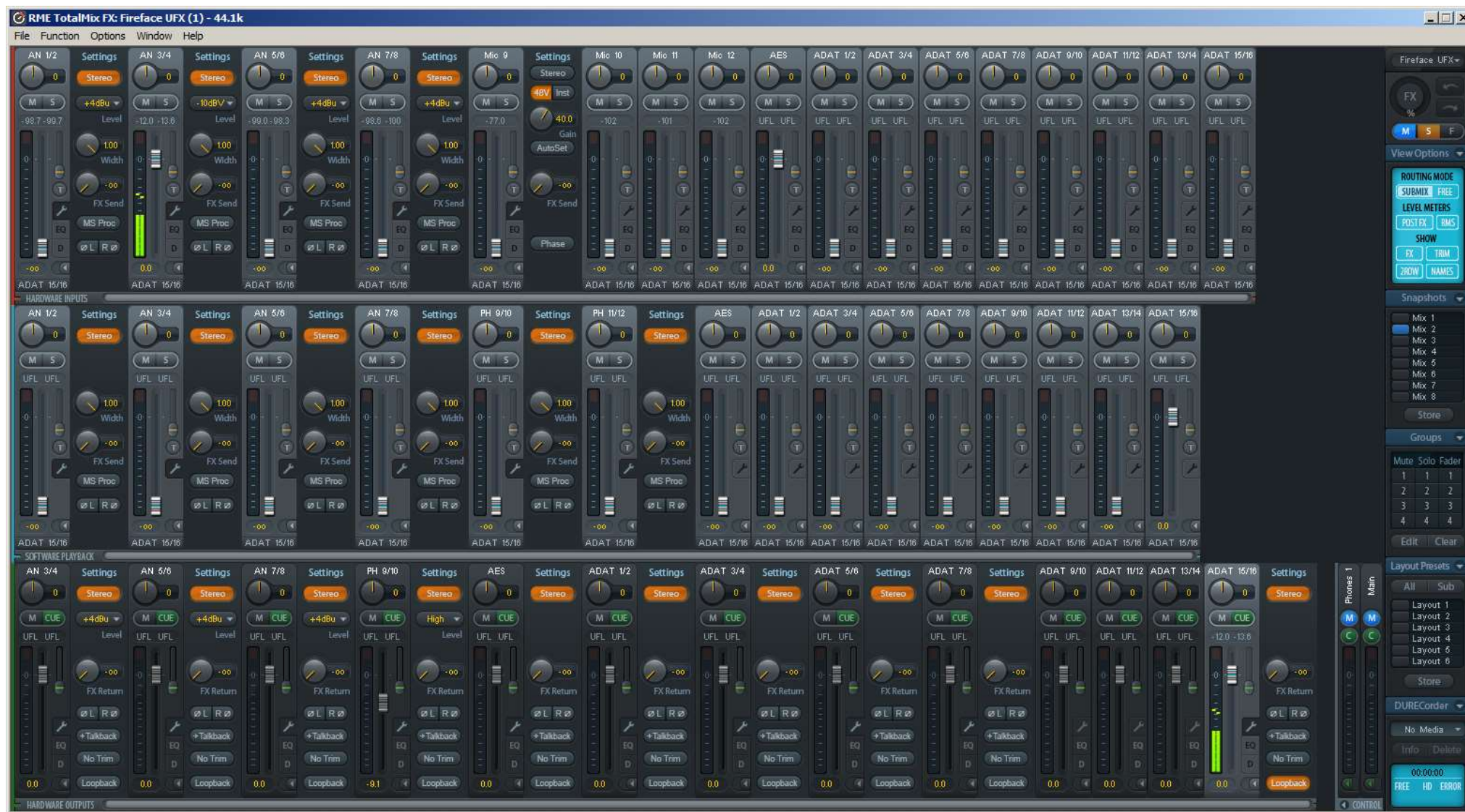
Signal show up on AN3/4, see: Hardware Input: Analog3/4

- 2) Go to Section: **Software Playback**
- 3) Click on: **ADAT15/16**
- 4) Slider on ADAT15/16 to: **0dB**

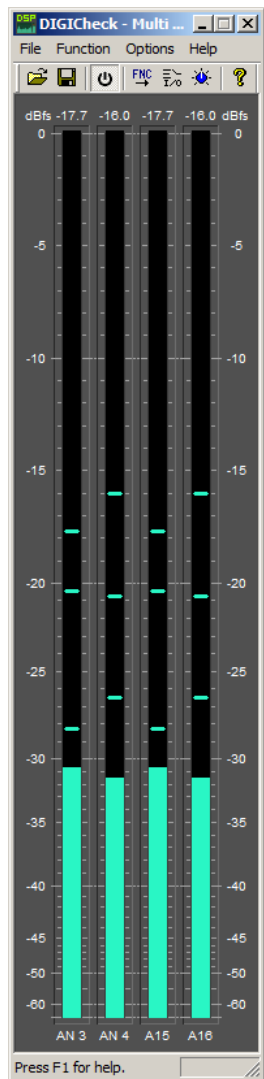
This is Mapping AN3/4 to: Software Playback: ADAT 15/16

- 5) switch on **Loopback** of ADAT15/16 Hardware Outputs.

This is key. Now **Hardware Outputs ADAT15/16** are mapped to **Software Input 15/16** (by clicking on Loopback)



Control may be by Digicheck, a software from RME to supervise ASIO of RME devices, see here:



Here configuration of Digicheck:

Input Device Setup

ASIO driver select
ASIO Fireface USB

☐ ASIO ☒ Hardware Level

OK
Cancel
Help

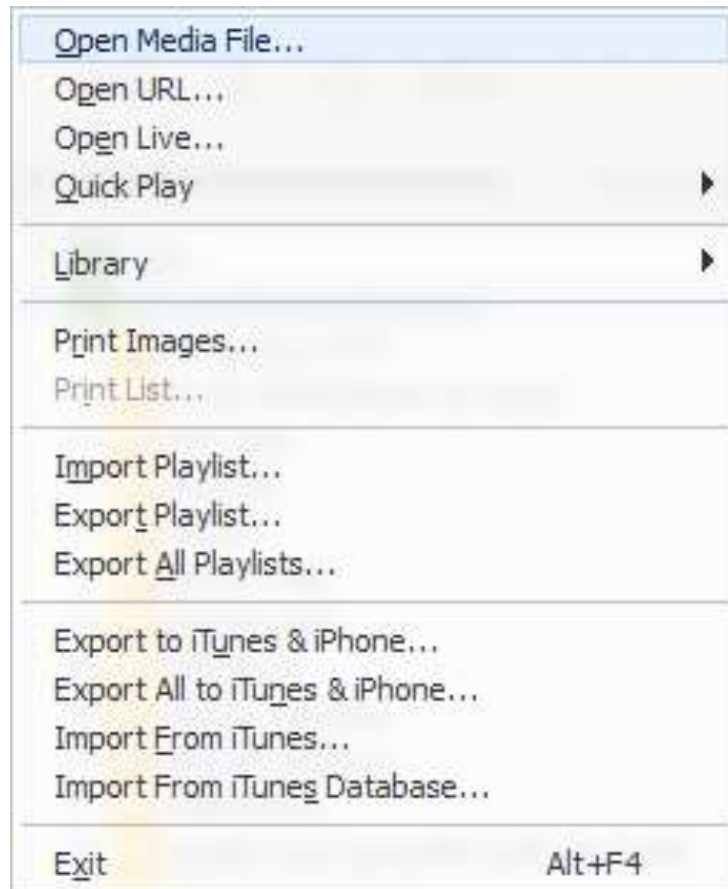
Bar	Device	Channel	Source
1 (L)	Fireface UFX	Analog 3	Input
2 (R)	Fireface UFX	Analog 4	Input
3 <input checked="" type="checkbox"/>	Fireface UFX	ADAT 15	Output
4 <input checked="" type="checkbox"/>	Fireface UFX	ADAT 16	Output
5 <input type="checkbox"/>	Fireface UFX	Analog 1	Input
6 <input type="checkbox"/>	Fireface UFX	Analog 1	Input
7 <input type="checkbox"/>	Fireface UFX	Analog 1	Input
8 <input type="checkbox"/>	Fireface UFX	Analog 1	Input

Preferred sample rate
32kHz
44.1kHz
48kHz
64kHz
88.2kHz
96kHz
176.4kHz
192kHz

☒ Set sample rate for ASIO inputs

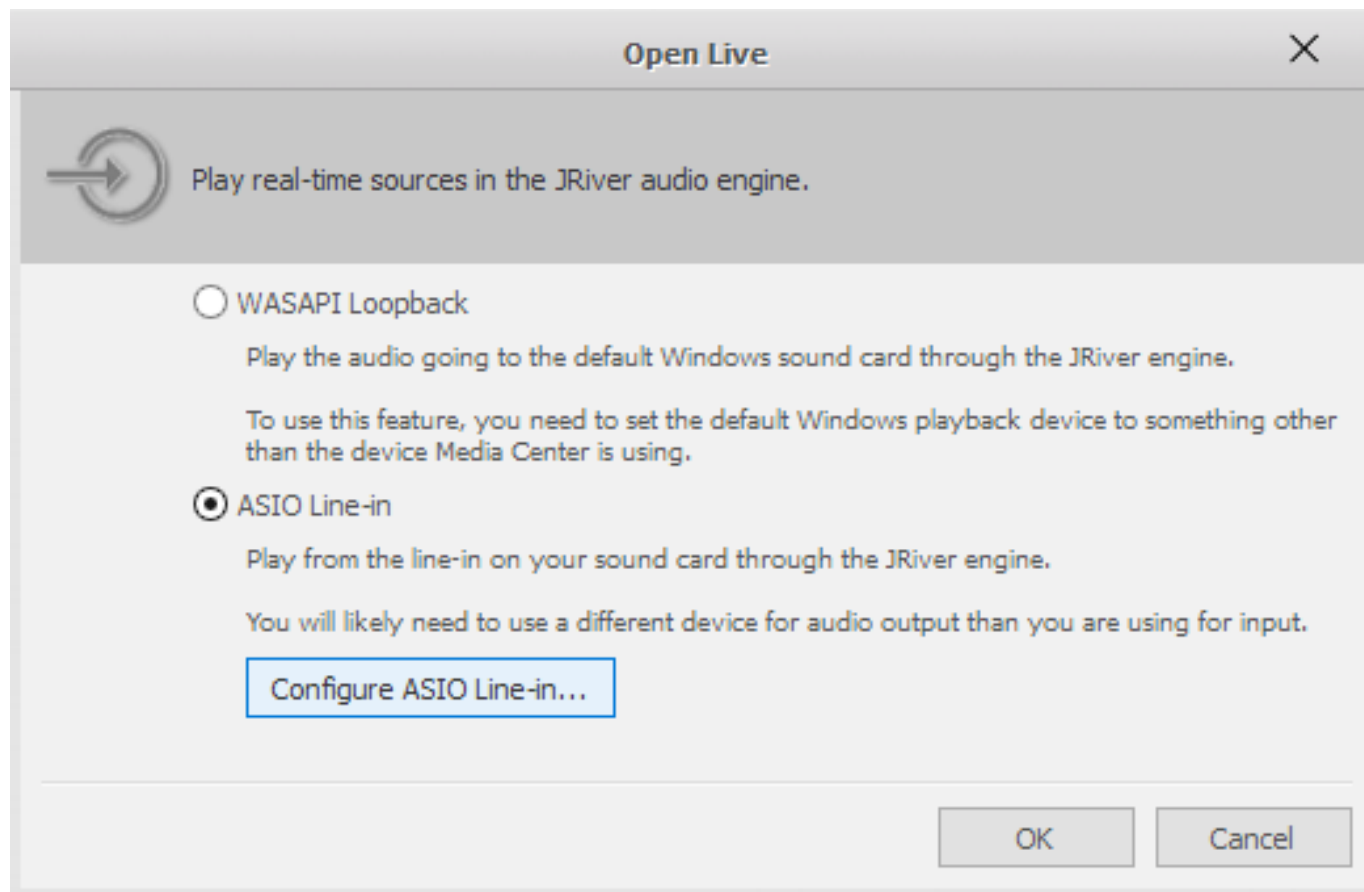
Fill Incremental

JRiver MC25.00.92

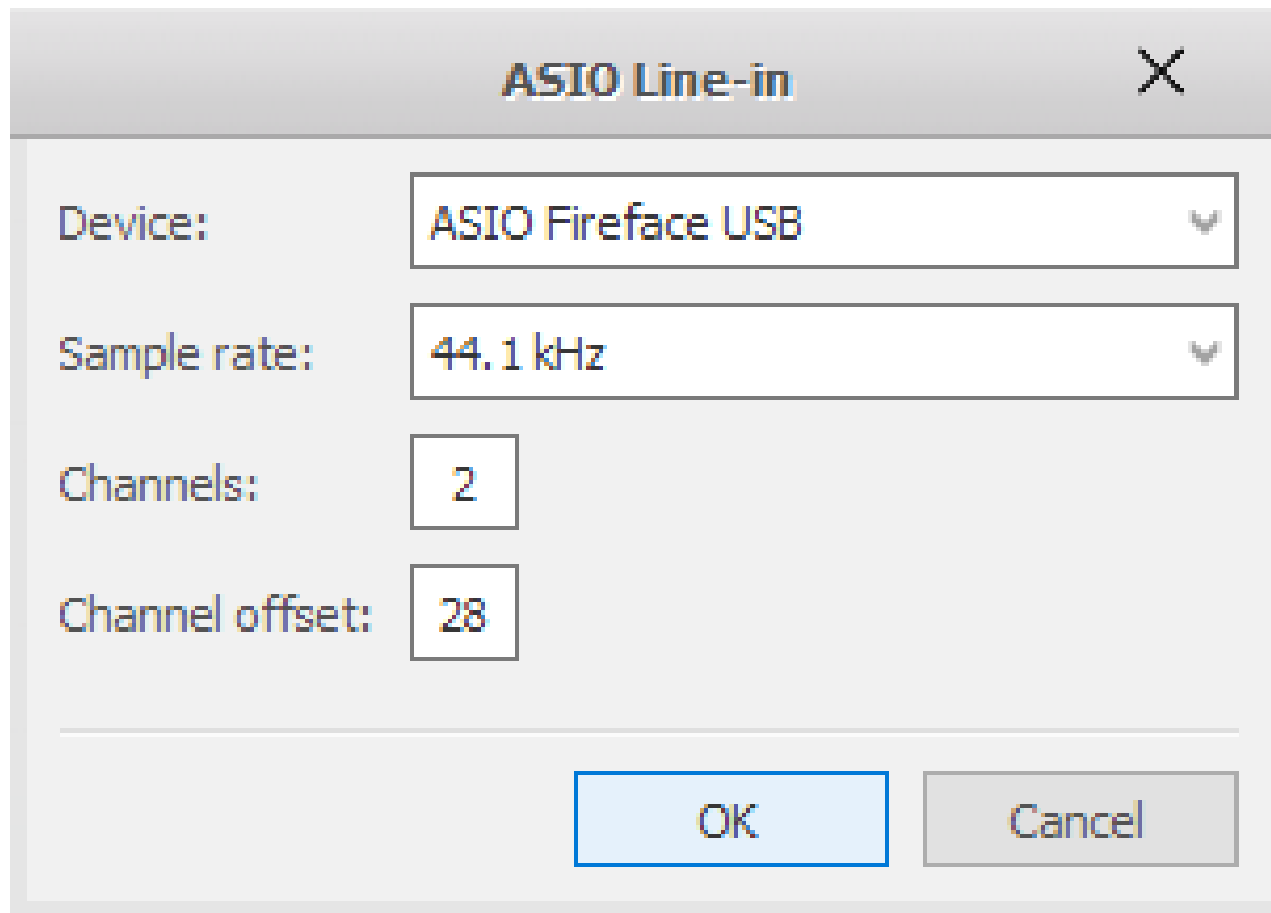


Choose: „Open Live“

Choose: **ASIO Line-in**



Click on „**Configure ASIO Line-in**“

A screenshot of the 'ASIO Line-in' dialog box. The title bar is grey with the text 'ASIO Line-in' and a close button 'X'. The main area is light grey and contains four settings: 'Device:' with a dropdown menu showing 'ASIO Fireface USB', 'Sample rate:' with a dropdown menu showing '44.1 kHz', 'Channels:' with a text box containing '2', and 'Channel offset:' with a text box containing '28'. At the bottom, there are two buttons: 'OK' (light blue) and 'Cancel' (grey).

ASIO Line-in

Device: ASIO Fireface USB

Sample rate: 44.1 kHz

Channels: 2

Channel offset: 28

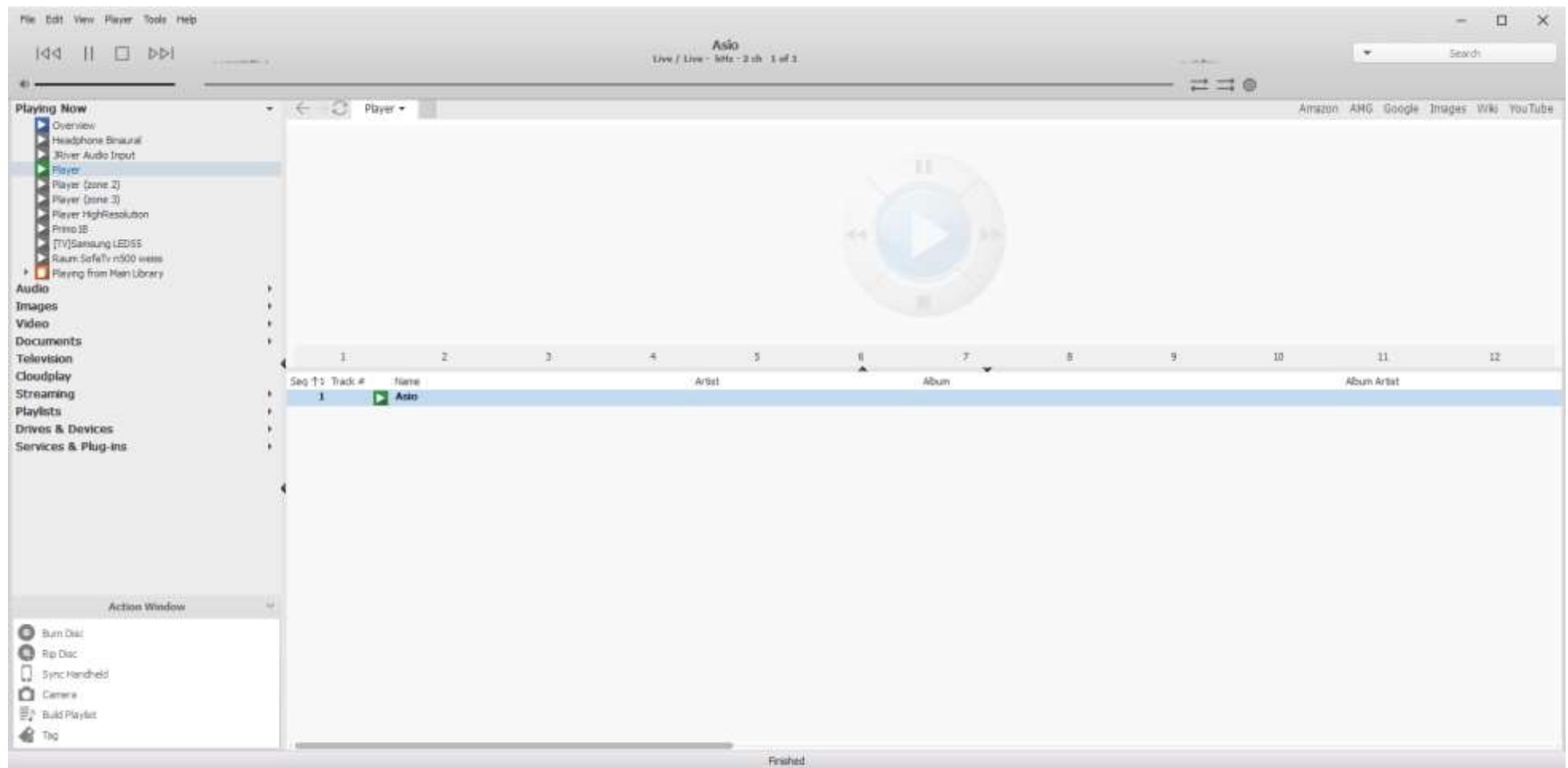
OK Cancel

Select Device: **ASIO Fireface USB**

Select: Sample Rate: **44.1kHz**

Select Channels: **2** for Stereo

Select Channel offset: **28** in this example as we map ADAT 15/16 which are Channel29 and Channel30 to JRiver „**Open Live**“ inputs



Thats all! Enjoy music!

Appendix:

Signal flow in this example:

- Analog in AN3/4
- AN3/4 routed to Hardware Outputs ADAT15/16
- With Loopback routed to Software Inputs ADAT15/16(internal, not visible in Totalmix!)
- In Jriver ADAT15/16 routed to JRiver inputs of „Open Live“ by assigning the **right** offset
- JRiver play as any Audio

Drivers, Version: RME UFX, JRiver

